

# INFINIT<sup>e</sup>

ELECTRONICS, INC.

## PIM Finder

$$\text{Width} = \frac{c}{2f_0 \sqrt{\frac{\epsilon_R + 1}{2}}}; \quad \epsilon_{eff} = \frac{\epsilon_R + 1}{2} + \frac{\epsilon_R - 1}{2} \left[ \frac{1}{\sqrt{1 + 12 \left(\frac{h}{W}\right)}} \right]$$

$$\text{Length} = \frac{c}{2f_0 \sqrt{\epsilon_{eff}}} - 0.824h \left( \frac{(\epsilon_{eff} + 0.3) \left(\frac{W}{h} + 0.264\right)}{(\epsilon_{eff} - 0.258) \left(\frac{W}{h} + 0.8\right)} \right)$$

$$R_1 = Z_0 \left[ \frac{1}{\frac{2.42}{10} \frac{W}{h} - 1} \right]$$



---

# External PIM Measurement

- Measuring PIM within the antenna infrastructure is now routine and carried out in many countries
- However PIM sources can occur externally to the antenna infrastructure and will effect network quality in the same way
- Locating PIM sources when they are external to the antenna has been difficult until now.
- Kaelus PIM Finder is a product to assist in the location of PIM external to the antenna infrastructure in a more efficient and effective way
- PIM finder is a software option to be used in conjunction with the Kaelus iVA cable and antenna analyser and iPA portable passive intermodulation products

# PIM Finder – What do I need



iPA Portable PIM Analyzer & Tablet



iVA With PIM Finder Software  
 Note: Software is an upgrade option on existing iVA hardware



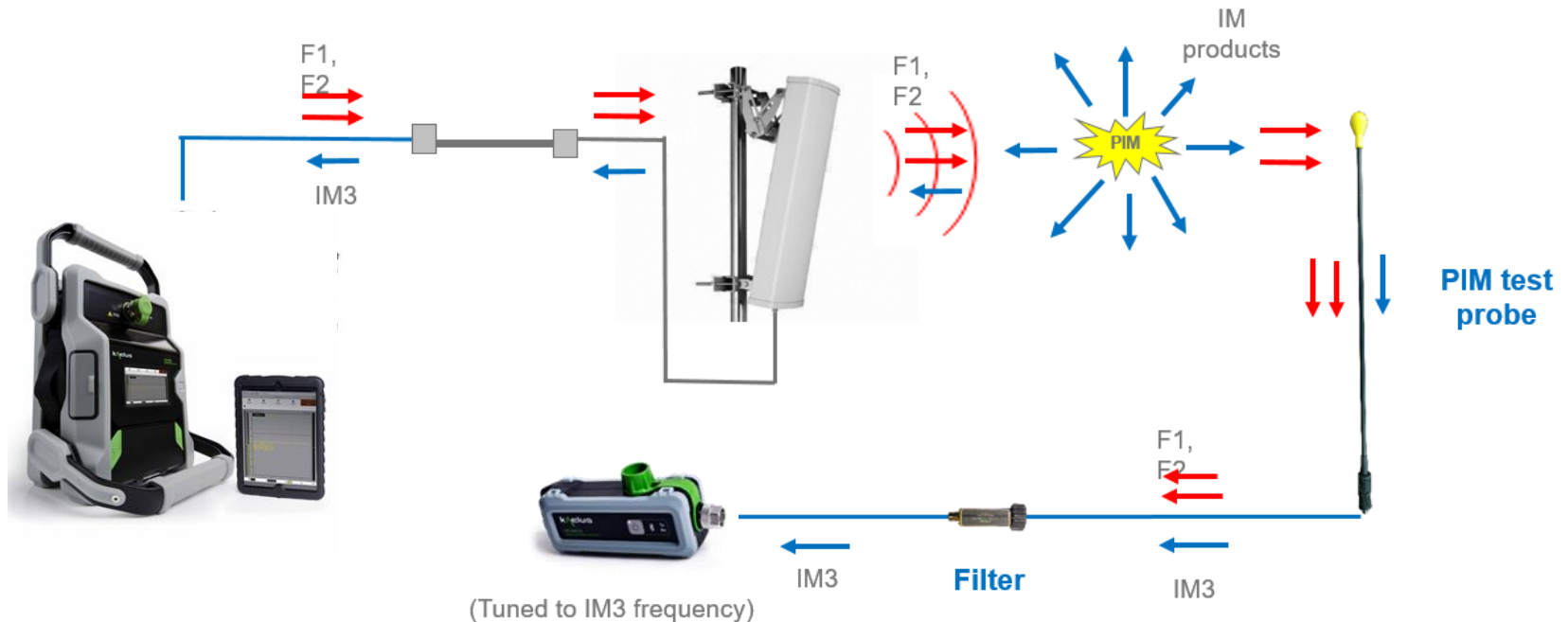
Interference Mitigation Filter  
 Tuned to pass low level PIM signals  
 Reject Tones from the iPA,  
 and any other high power signal at the sites



Low PIM 560-2750MHz PIM Test Probe

# External PIM measurement

## How it works (Refer App Note)



- iPA provides 2 x 20W RF carriers to be transmitted
- iVA provides a receiver for measuring the externally generated PIM
- Device with the free Kaelus unify app installed
- The filters attenuate the iPA transmit carriers before the receiver
- The probe provides the ability to hunt for external PIM sources

# Process works for all site types



Tower macro



Rooftop macro



DAS



Small cell

- The probe provides the ability to hunt for external PIM sources by
  - Lightly touching metal surfaces of suspected PIM sources
  - Placing in close proximity to potential PIM sources

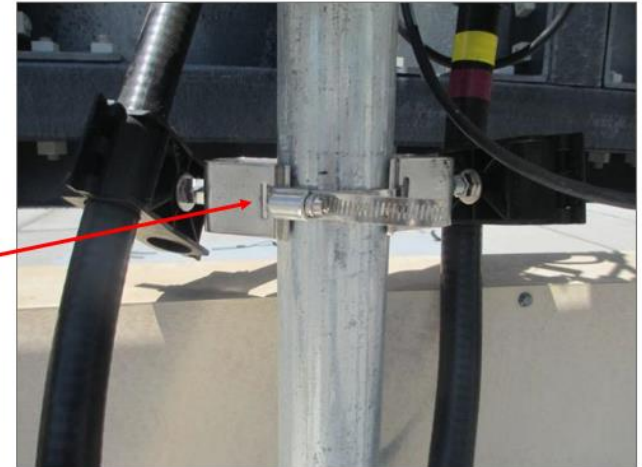
# Common sources



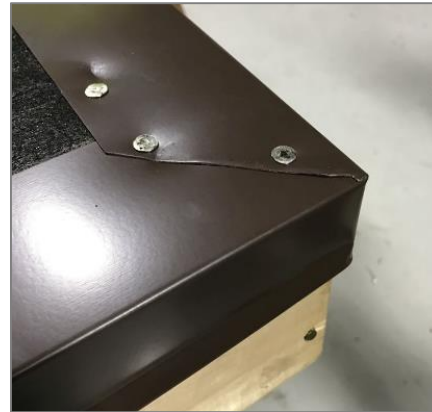
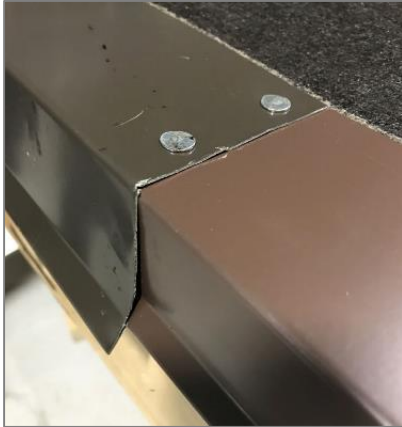
Loose mounting brackets



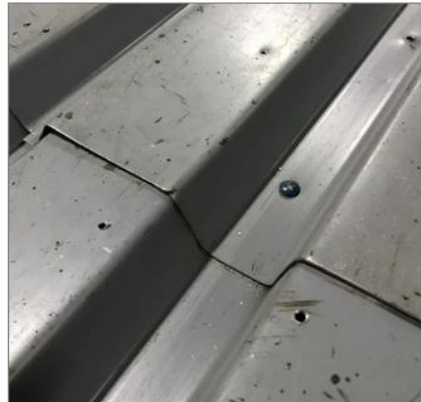
Cable support brackets



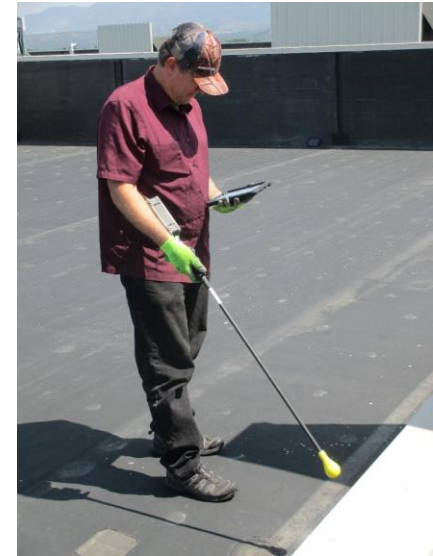
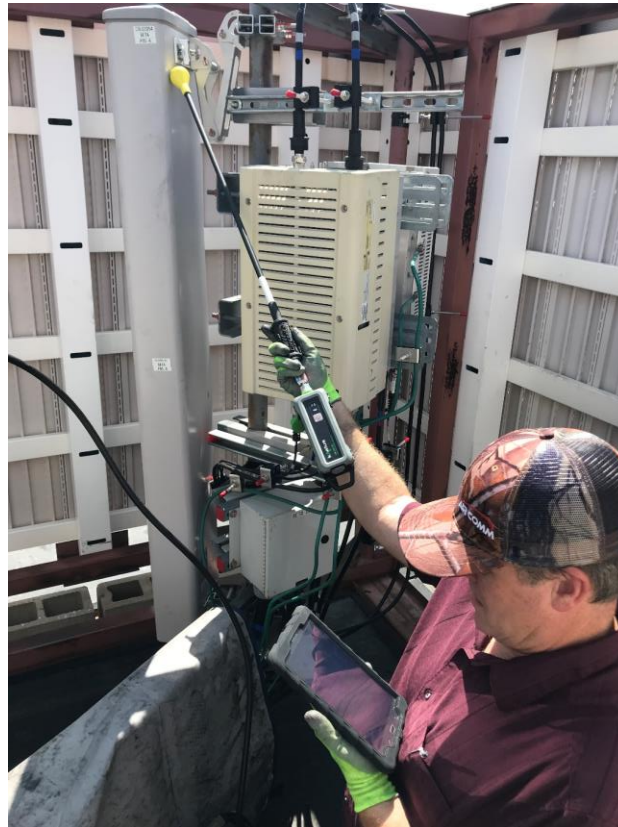
# Common sources



Parapet walls / flashing.  
Fasteners under roof membrane

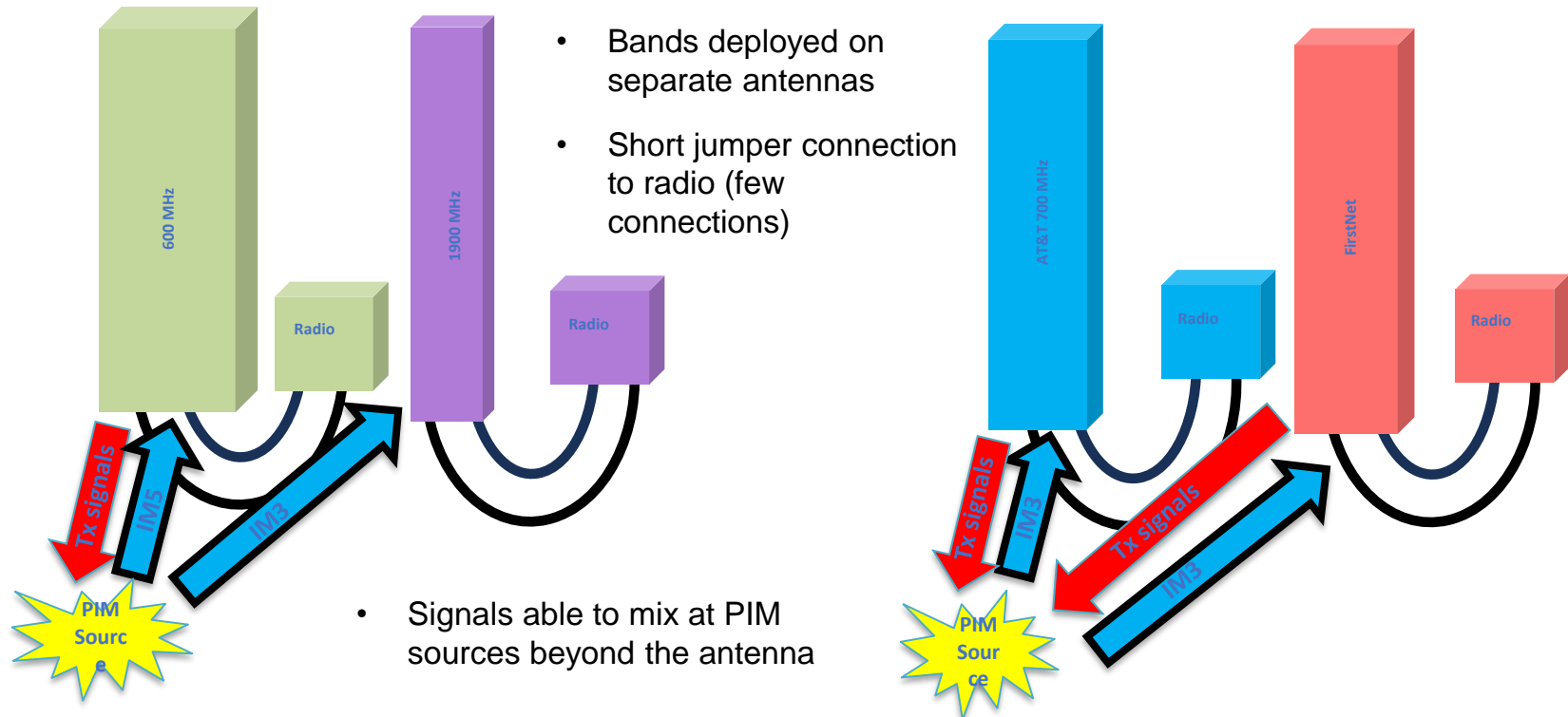


# Field Measurement

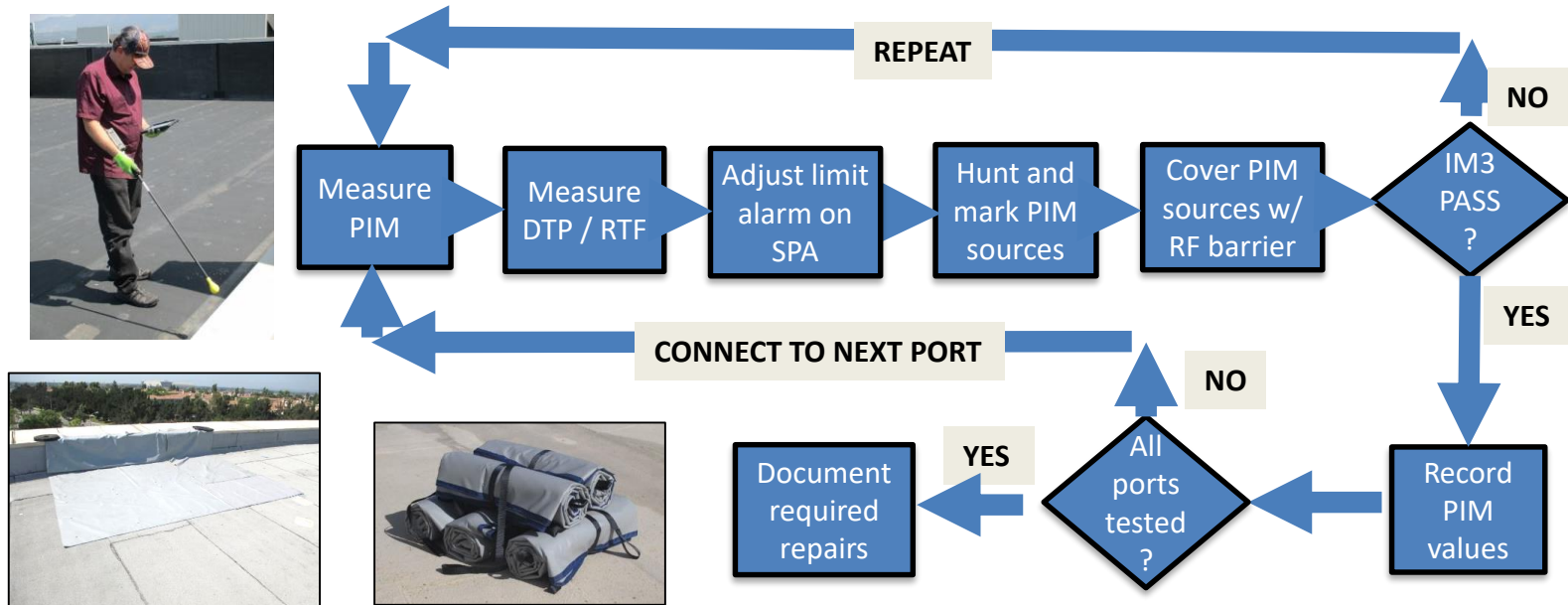




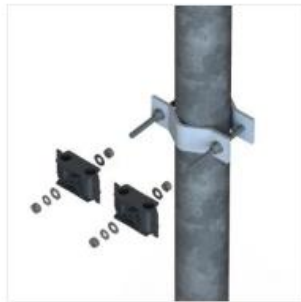
# Majority of new PIM issues likely to be external



# External PIM measurement process



# Concealfab – PIM Mitigation Products and PIM Training



LOW PIM CABLE  
SUPPORT BRACKETS™



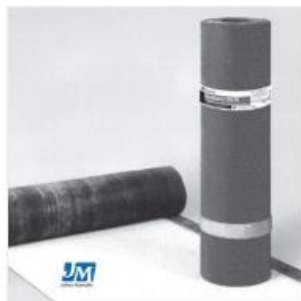
PIM BLANKET™



PIM CERTIFICATION  
TRAINING



PIM PROBE™



PIM SHIELD ROOFING™



PIM SHIELD TAPE™